

**MOMENTIVE™**

**Silicone Specialties  
for Personal Care**



Momentive products can help create silkier lotions, more efficient shampoos and conditioners, drier antiperspirants, more spreadable sunscreens and brighter, smoother cosmetics. Our growing personal care product line includes specialty fluids, copolymers, blends, gels, film formers, micropowders, emulsions and dispersions. Our highly effective formula for client relationships includes: superb products, enthusiastic technical support and application development assistance, based on more than 70 years of silicone expertise. Globally, we can help customers create breakthroughs, reduce costs and achieve their business goals.







Collaborating to Advance Innovation	4
Sensory Enhancement	7
Softening and Conditioning	13
Surface Modification	17
Consistent Spreading	21
Silicone Specialties Potential Applications	24
Silicone Specialties Typical Physical Properties	28

## Core Competencies and Differentiated Technologies for Personal Care

Sensory Enhancement

Softening and Conditioning

Surface Modification

Consistent Spreading

## Collaborating to Advance Innovation

At Momentive, we have a number of core competencies that can allow us to deliver consumer-perceivable benefits and support key marketing claims for personal care products. These include:

- Sensory enhancement to provide the “WOW” feel to finished formulations
- Softening and conditioning to give hair that silky, soft feel and healthy look
- Surface modification to impart transfer resistance, long wear with comfort, shine and protection
- Consistent spreading and wetting to improve dispersion of pigments and spreading of active ingredients and organic oils



# Vibrant











# Sense

## Touching is Believing

There is a silky softness offered by our specialty silicones that can be hard to achieve using other materials. In makeup, creams, lotions, shampoos, conditioners and styling products, we put the “WOW” right there on your fingertips. It may put an end to tacky formulations that can take forever to smooth and dry. Our specialty silicones typically work quickly, for a softness all our own.



Velsil organo-silicone gels are based on a patented and unique silicone crosspolymer network that can deliver outstanding sensory benefits in most types of skin care and color formulations.

Velvesil 034 organosilicone gel is an excellent candidate to consider to help disperse and spread cosmetic ingredients without tackiness. It can help spread inorganic pigments, deliver brighter and more uniform color in makeup formulations and provide more uniform coverage in sunscreens. It has excellent compatibility with many organic materials, enhancing the sensory benefit and stability of a wide range of personal care products.

The bar chart displays the Maximum Normal Force (N) for two formulations: Control and with 20% Velvessil 034 organosilicone gel. The y-axis ranges from 0.000 to 8.000 N. The Control group shows a significantly higher force (approx. 6.9 N) compared to the formulation with 20% Velvessil 034 organosilicone gel (approx. 0.8 N). Within each group, the force for Shea Butter is lower than for Safflower Oleosomes.

Formulation	Shea Butter (N)	Safflower Oleosomes (N)
Control	~3.2	~6.9
with 20% Velvessil 034 organosilicone gel	~0.8	~1.0

Velvisol DM silicone can promote easier spreading on the skin, leaving an exquisite, long-lasting, moisturizing and silky feel and enhanced sensory qualities for skin care products and color cosmetics. This patented multifunctional silicone copolymer network is non-emulsifying, dispersed in dimethicone, and formed in a creamy, transparent gel. It exhibits shear-thinning behavior, typically allowing smoother, more consistent spreading of anti-aging, sunscreen and moisturizer products.

Velvesil Plus emulsifiable gel readily offers excellent compatibility with many organic materials, including highly polar organics, as well as hydrophilic and silicone components. Its powdery, silky skin feel may enhance the sensory performance of a wide range of personal care products. Easily processed at low temperatures and low shear, it may help reduce manufacturing time and expense. This versatile product is an excellent candidate to consider for formulations, from low viscosity, sprayable emulsions to highly structured anhydrous gels, all with a soft, elegant, powdery feel.

The diagram illustrates the relationship between skin types, sensory attributes, and Velvesil product options. It is structured as a 2x2 grid of skin types, a 2x2 grid of sensory attributes, and a 2x2 grid of product options.

**Skin Types (Left):**

- Top Left: Normal
- Top Right: Dry
- Bottom Left: Oily
- Bottom Right: Combination

**Sensory Attributes (Right):**

- Top Left: Dry Sensory
- Top Right: Soft Focus
- Bottom Left: Moisturizing Sensory
- Bottom Right: Soft Focus

**Velvesil Benefit Options (Far Right):**

- TEWL Reduction
- Soft-Focus Benefit
- Pigment Dispersion
- Ease of Formulation

**Product Options (Center):**

- Velvesil FX Gel Powder** (Purple box, associated with Dry Sensory and Soft Focus)
- Velvesil 125 Silicone** (Orange box, associated with Dry Sensory and Soft Focus)
- Velvesil Plus Gel** (Light blue box, associated with Moisturizing Sensory and Soft Focus)
- Velvesil DM Silicone** (Green box, associated with Moisturizing Sensory and Soft Focus)
- Velvesil 034 Silicone** (Red box, associated with Moisturizing Sensory and Soft Focus)

Each Velvessil material offers a distinct sensory with functionality. The choice depends upon the finished formulation requirements.





Velvesil 125 silicone can deliver a line blurring effect and a unique, soft, powdery dry skin feel to cosmetics.

Velvesil Plus emulsifiable gel is typically easy to use for formulations and may help reduce manufacturing time and cost while still helping to improve the sensory experience for your customer.

Velvesil\* FX Gel Powder

Velvesil FX gel powder can enhance natural-look coverage with a delightful sensory phenomenon. It combines the translucent soft-focus ability of boron nitride with the powdery velvet touch of our patented Velvesil chemistry. Adding a trisiloxane typically improves the dispersion of boron nitride within the gel matrix, for a more natural, smoother appearance on skin. This patent-pending combination may stimulate the senses while it helps blur fine lines and wrinkles.

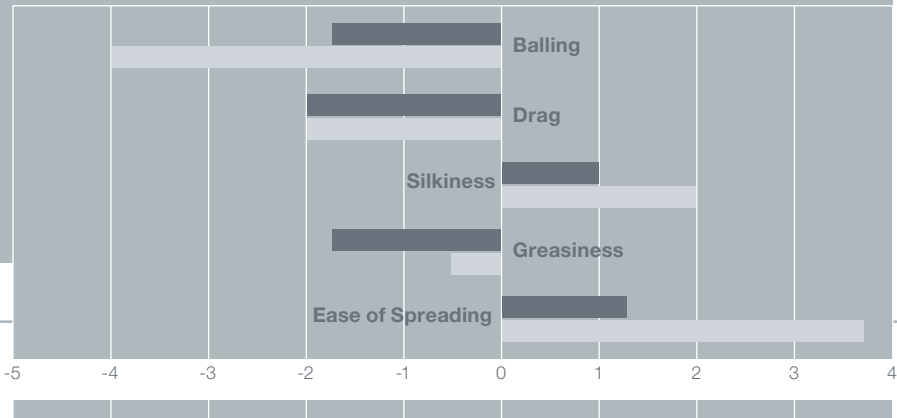
Velvesil 125 Silicone

Velvesil 125 silicone crosspolymer network is our patented multifunctional sensory enhancer. It offers an exceptional feel during rub-in because of its unique particle size distribution, and it offers a silky and powdery afterfeel. Its polymerization chemistry differs from the traditional “silicone structurants.” It typically provides soft focus and visual effects and gives skin a fresh new feel. Velvesil 125 silicone crosspolymer network is an excellent candidate to consider for a multitude of formulation applications. Formulators have found it to be an efficient thickener of silicone and organic ingredients, with excellent compatibility. It can be used as a stabilizer/thickener for W/O and O/W emulsions.

Silsoft\* Silicone Gel

Silsoft Silicone gel is a crosslinked, high molecular weight silicone network that spreads evenly and quickly for a silky, cushioning feel. It offers significantly reduced balling effect normally associated with elastomer gels. The addition of crystal clear Silsoft Silicone gel can improve the sensory aesthetics of formulations when organic oils or sunscreens cause tackiness. Silsoft Silicone gel can be added easily into the oil phase of a formulation and can withstand heat and high shear, generally without the need for post homogenization.

Velvesil Platform Benefits



Velvesil DM Silicone    Velvesil 125 Silicone

Note: Test results. Actual results may vary.

**Overview:**  
**Tospearl\* Microspheres**

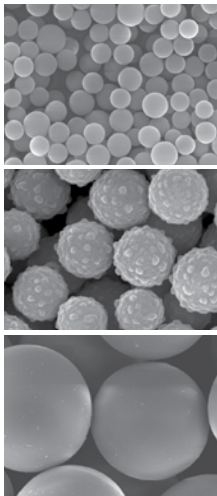
Tospearl microspheres can impart a luxurious and lubricious feel to a variety of creams, lotions and color cosmetics. This series is comprised of mono-dispersed, micro-fine spherical crosslinked siloxane particles. Each grade has a specific particle size to deliver precise qualities and can typically reduce pressed-powder agglomeration. Tospearl microspheres can improve the spreadability of creams and enhance soft focus effects, to help minimize fine lines and wrinkles.

**Tospearl AQ Microspheres**

Tospearl AQ microspheres are silicone spheres coated with a hydrophilic cationic polymer. These microspheres can be incorporated easily into oil-in-water emulsions to help provide a smooth and silky sensory experience. In addition, Tospearl AQ microspheres can help create formulas that enhance the blurring of fine lines and wrinkles and improve rub-in of skin care formulations.

**Variety in Size and Shape**

Tospearl microspheres are typically available in a wide variety of sizes and a unique shape. Their very tightly controlled particle size distribution is one of the keys to their performance benefits.





# Tospearl\* and Momentive Softouch\* Comparative Benefits

## Typical Optical Benefits



## Typical Sensory Benefits



## Typical Physical Properties

Momentive Softouch shape = Plates  
Tospearl shape = Spheres



■ Momentive Softouch RI = 1.8

■ Tospearl RI = 1.48

Tospearl and Momentive Softouch materials typically offer differentiated purposes in finished formulations and have complementary performance benefits.

# Sensory Enhancement

## Silsoft\* E-Pearl Emulsion

11

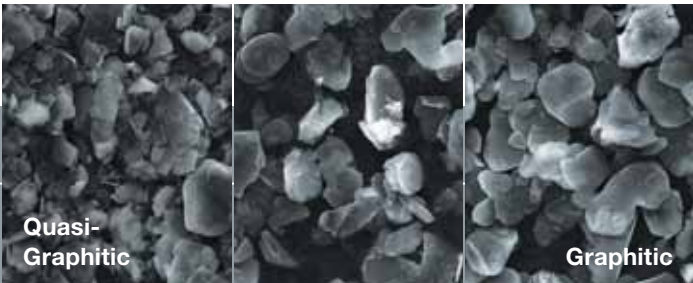


Silsoft E-Pearl emulsion is uniquely versatile and multifunctional, and an excellent candidate to consider for addition to the water phase of a variety of personal care products, from facial masks to body washes and sun care products. Consumers typically experience a rich sensory feel while benefiting from line blurring and skin lightening. It is a patent-pending, non-ionic emulsion of polymethylsilsesquioxane powder, high molecular weight dimethicone and an alkyl-functionalized polysiloxane. It is very easy to use in formulations and may even be post-added to existing ones. You may achieve unique sensory qualities in skin care products with high water content, even more than 90% water.

## Momentive Softouch Boron Nitride (BN) Powder

Momentive Softouch BN powder can create a wide range of tactile and optical effects, including a unique, silky, luxurious feel in color cosmetic and skin care products, with improved adhesion and wear. Testing demonstrated that Momentive Softouch BN powder could significantly enhance many cosmetic products with soft-focus properties and non-transfer characteristics—the result of its layered, hexagonal-crystal structure.

### Momentive Softouch Boron Nitride: Soft Focus to Lubricious



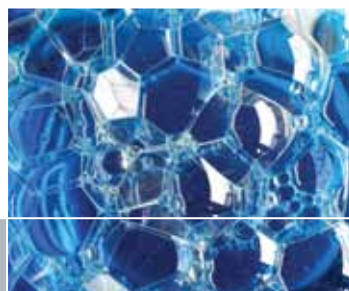
Increasing soft focus ← —

— → Increasing lubricity

Momentive Softouch boron nitride powders are available in an array of crystal morphologies for formulation flexibility.

Note: Test results. Actual results may vary.

# Luxe





# Touch

## Feel the Difference

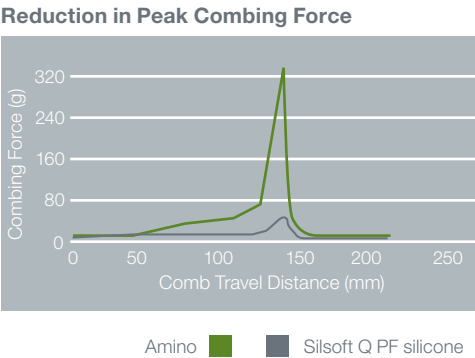
Healthy hair should be soft, full and shiny, not heavy or greasy. Traditional silicones offer great conditioning, but lack the multifunctionality of our specialty materials. Our growing portfolio of  $[AB]_n$  amino copolymers soften each strand, like a softener on silk, so hair is easier to comb, wet or dry. Our amino “quats” cover every hair shaft with a protective, conditioning film, trapping moisture within, for longer lasting softness and manageability. Create a touchable feel and a thrilling shine that makes your consumers take notice.



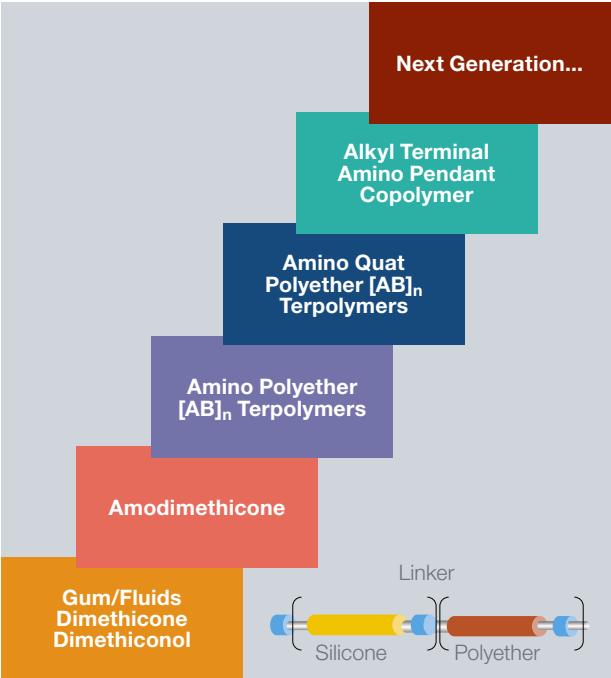
Silsoft\* Q PF Quaternary Silicone

Silsoft Q PF quat silicone is a 20% active microemulsion of a proprietary silicone quat that can help deliver volume and amazing softness, as well as conditioning, to fine hair. The unique phase behavior of the silicone quat with water relates to the lubricity of Silsoft Q PF quat silicone during wet combing and its exceptional softening performance benefits. Silsoft Q PF quat silicone is an excellent ingredient to consider for shampoos, conditioners and pre-treatment products aimed at providing volume and softness to fine hair.

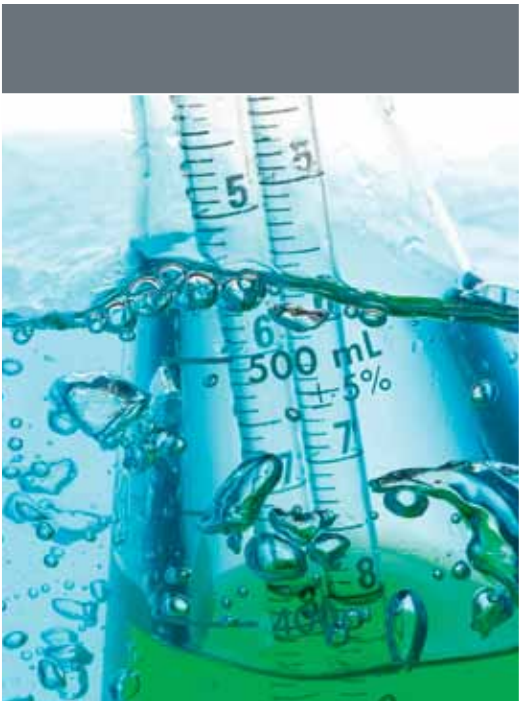
Silsoft Q PF quat silicone can significantly reduce peak combing force.



Conditioning for Hair Care



Hair softening and conditioning: the history of platform innovation and differentiated technologies for consumer needs, by Momenive.



Note: Test results. Actual results may vary.





## How Does It Work?

### Silicone film on hair fiber

#### Key properties

- Substantive; hydrophobic
- Continuous film
- Low thermal conductivity

#### Typical function

- Rinse-resistance
- Lower rate of water loss
- Even distribution of heat
- Modulated rate of temperature increase

#### Potential end benefits

- Smooth; soft feel
- Moisturized hair
- No localized damage
- Less damage to cortex
- Hair is less brittle

### Silicone droplets on hair fiber

#### Key properties

- Substantive; small size droplets

#### Typical function

- Rinse-resistance
- Penetration under uplifted cuticles
- Slowed water loss from hair
- Heat-sink and hydrogen bonding

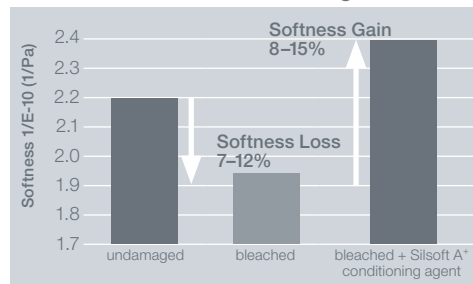
#### Potential end benefits

- Smooth; soft feel
- Good physical condition

## Silsoft\* A+ Conditioning Agent

Silsoft A+ conditioning agent can help provide excellent conditioning to damaged hair. It is a surfactant-free emulsion of an amino  $[AB]_n$  multiblock copolymer silicone with an optimal hydrophilic/hydrophobic balance. Compared to traditional amino silicones, Silsoft A+ conditioning agent typically has enhanced deposition onto damaged hair, therefore offering better performance at the same actives levels, with potential cost-saving benefits.

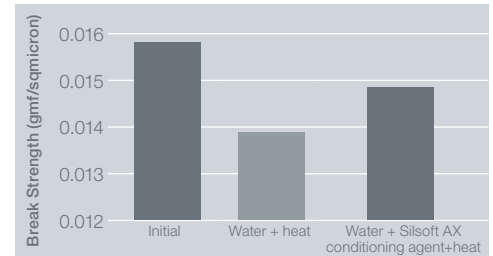
### Silsoft A+ Conditioning Agent Moisturization Benefit for Damaged Hair



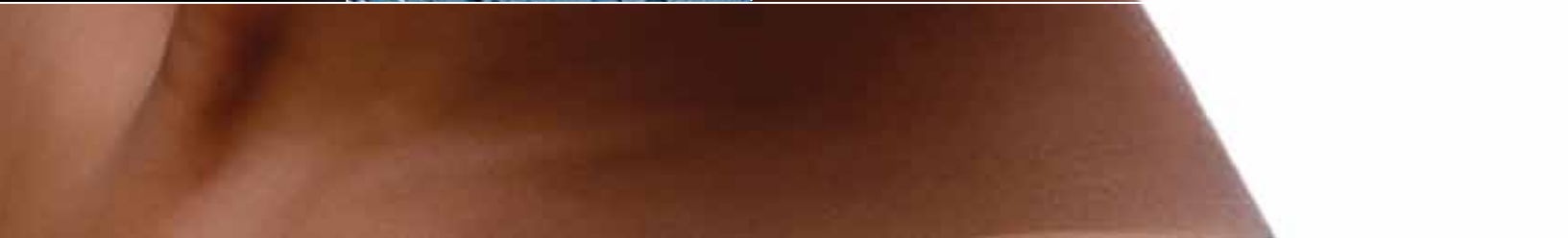
## Silsoft AX Conditioning Agent 15

Silsoft AX conditioning agent is an alkyl modified amino fluid that can help formulas deliver superior smoothness and shine, even when hair dries. The combination of both pendant amino and terminal alkyl groups on the silicone structure helps provide enhanced smoothness, softness and manageability, with thermal protection.

### Silsoft AX Conditioning Agent: Thermal Protection

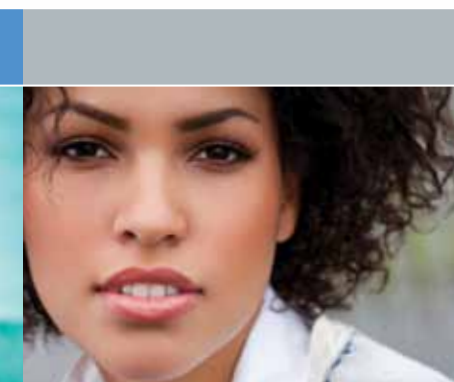


# Shine



## Stay Flexible

Sometimes beauty is just on the surface: by forming a film on skin or hair, you can formulate personal care products with real staying power—and less transfer. Our specialty silicones can also enhance the sensory qualities of the film. Now you can enjoy long lasting wear, with comfort. You can use a film former as a surface modifier to improve water resistance and boost the performance of sunscreens.

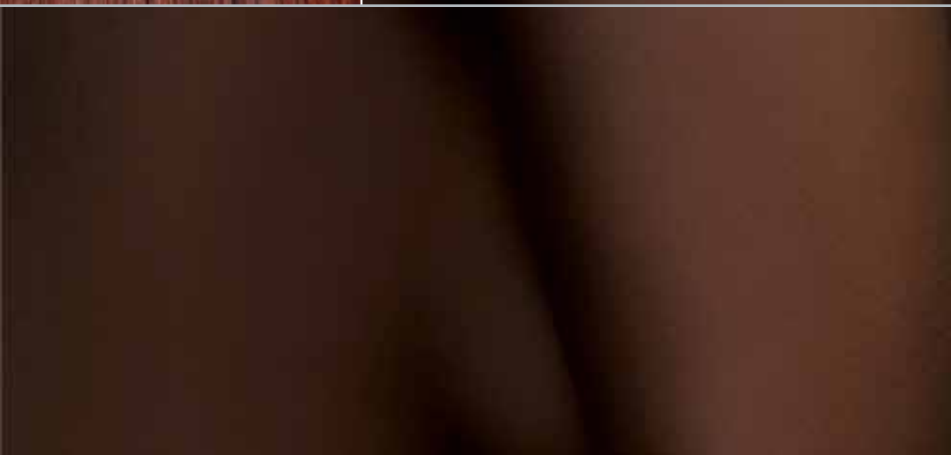


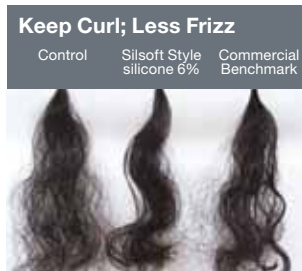
# Enhance





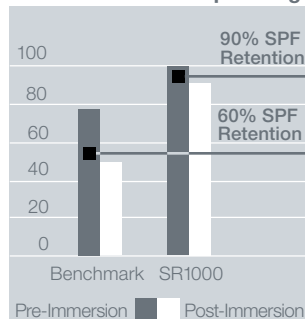
SilForm® Flexible resin and SR1000 can provide improved wet rub-off to mascaras, and non-transfer capabilities when added to lipsticks and skin care products.





Silsoft Style silicone can reduce frizz caused by high humidity and can help maintain curl memory.

#### In-Vitro SPF: Water-proofing



The addition of SR1000 can boost SPF values and water resistance.

## Silsoft\* Style Silicone

Silsoft Style silicone can give hair long lasting, well-defined curls with a flexible natural feel in high humidity situations. An anionic film-forming emulsion of silica crosslinked polydimethylsiloxane, blended with a trisiloxane, it typically spreads rapidly with low tack and dries quickly.

## SR1000

SR1000 is a silicone MQ resin that has demonstrated post-immersion in-vitro SPF retention ranging from 50% to 90%. SR1000 offers adhesion to skin, reduced product wash-off and provides long lasting benefits.

## SilForm\* Flexible Resin

SilForm Flexible resin can give the unusual combination of comfort and long-lasting wearability in personal care formulations. SilForm Flexible resin is a film-forming silicone MT resin that mimics the movement of skin, for a comfortable, non-tight feel. It can offer the non-transfer properties that are typically associated with silicone resins and that are especially beneficial for color cosmetics and sun protection formulations. SilForm Flexible resin can also help improve the comfort of traditional MQ resins, without significantly impacting their excellent transfer resistance.

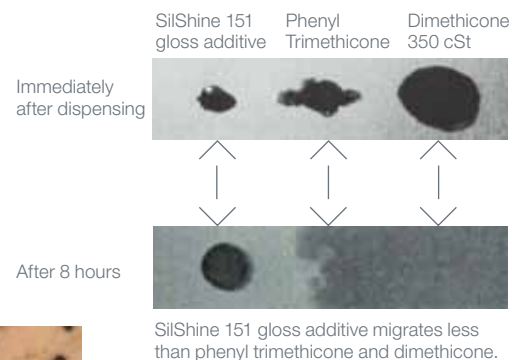


## Silsoft SurFace PF Film Former

Silsoft SurFace PF organosilicone is a proprietary film-forming emulsion combining non-transfer capabilities with excellent feel and water resistance. It can improve wearability in foundation, mascara and lipstick. Based on an acrylated silicone copolymer that is emulsion-polymerized, it can produce a stable silicone-in-water emulsion with a highly crosslinked silicone matrix. When dry, the emulsion typically leaves a continuous silicone film that is an effective transfer barrier.

## SilShine\* 151 Gloss Additive

SilShine 151 gloss additive is a silicone film former that can bring visually perceivable high shine to lips and hair. It offers high-refractive index, non-volatility, non-migration and organic compatibility. Its silicone resin structure typically yields excellent film-forming properties. Its phenyl functionality is compatible with most organic emollients, without sacrificing compatibility with silicones.



SilShine 151 gloss additive migrates less than phenyl trimethicone and dimethicone.

Note: Test results. Actual results may vary.

# Lasting







## Be Flawless

Flawless. That's the look. How do you make sure a pigment spreads evenly in a foundation? Reduce surface tension, so active ingredients can spread rapidly on the skin or down each individual hair. Choose from a wide range of dimethicone copolyols, alkyl trisiloxanes and organomodified siloxane copolymers to deliver the benefits you seek within different phases. Their multi-functionality can help you reduce production time and enhance product application properties.



# Flow

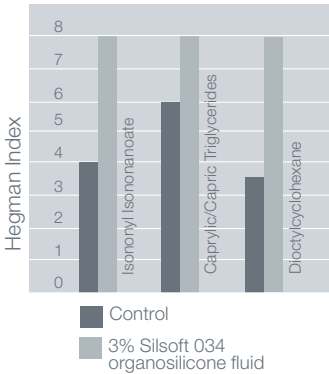
**Overview:**  
**Silsoft\* Dimethicone Copolyols**

Silsoft dimethicone copolyols are multifunctional, surface-tension-reducing molecules. The dimethicone portion can deliver excellent conditioning and gloss in hair care products and remarkable sensory qualities in skin care formulations. The polyether component typically results in emulsification properties, differentiated solubility and compatibility, plus ease of use during processing. By modifying these two portions of the molecular structure independently, a range of materials can be created, resulting in diverse foaming, solubility, emulsification, pigment dispersion and wetting benefits.

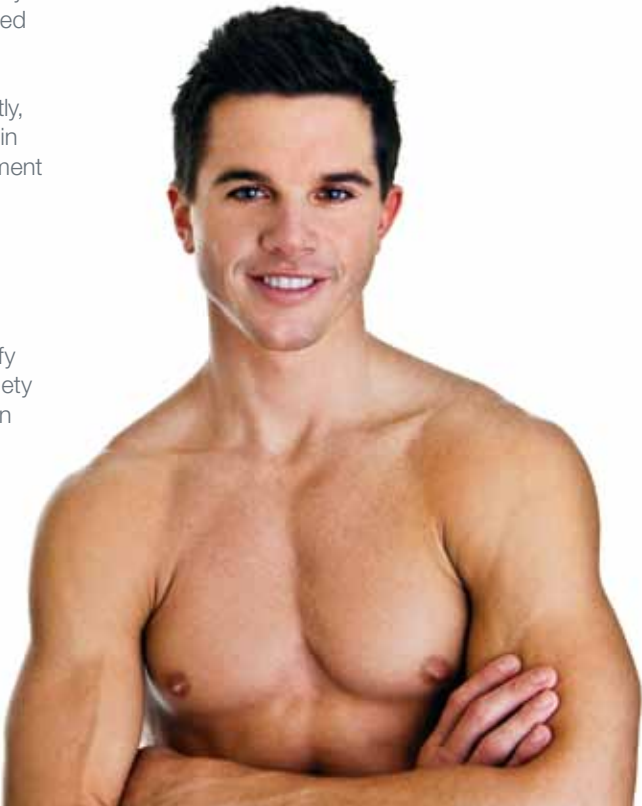
**Silsoft 034**  
**Organosilicone Fluid**

Silsoft 034 organosilicone fluid can help modify the feel and improve the spreadability of a variety of cosmetic oils. Now formulations that contain vegetable oils, cosmetic esters, petrolatum or mineral oil can feel less greasy. Silsoft 034 organosilicone fluid is an excellent candidate to consider for skin care products, providing a silky afterfeel. It can allow oil to spread more effectively throughout the formulation, so lotions and creams require less rub-in time. In color cosmetic formulations, Silsoft 034 organosilicone fluid can offer a silky afterfeel and can significantly improve the dispersibility of inorganic pigments in formulations that contain organic oils.

**TiO<sub>2</sub> Dispersibility in Various Carriers**



Silsoft 034 organosilicone fluid can help boost SPF values by spreading active ingredients evenly and quickly.



Smooth



The addition of a Silsoft dimethicone copolyol to a formulation can improve spreading for an easier, smoother application of personal care products.

Silsoft\* ETS Trisiloxane

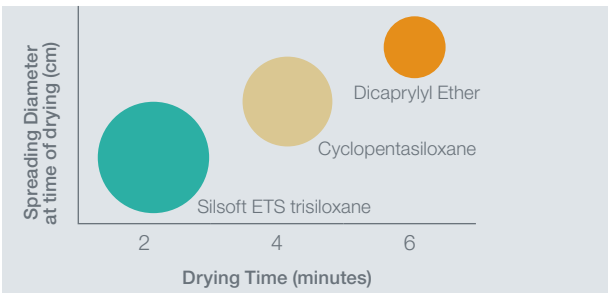
Silsoft ETS trisiloxane is a highly volatile linear siloxane that provides an outstanding sensory experience. It spreads easily and rapidly and feels dry and light upon application. Silsoft ETS trisiloxane, as a multifunctional raw material, can help build personal care products that provide highly valued sensory benefits.

Silsoft Spread SEL and Silsoft Spread TT Fluids

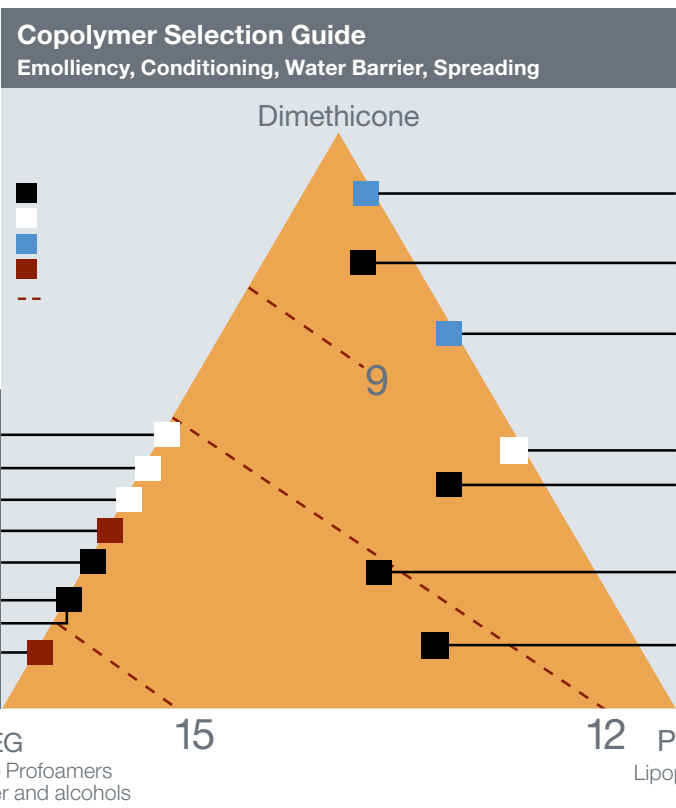
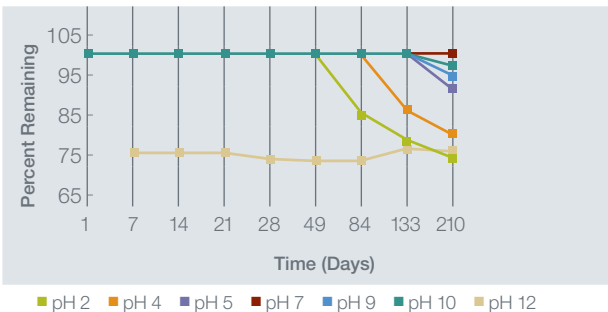
Silsoft Spread SEL fluid is a non-ionic organomodified siloxane copolymer and Silsoft Spread TT fluid is a non-ionic organomodified silane copolymer. These products can reduce the surface tension of personal care formulations, providing the superspreading of actives and inorganic pigments on skin and hair. Silsoft Spread SEL fluid is typically stable in the aqueous phase from pH 6 to pH 11, while Silsoft Spread TT fluid is typically stable in the aqueous phase from pH 2 to pH 12.

Spreading Potential

23



Hydrolytic Stability for Silsoft Spread TT Fluid



Each corner of the triangle either represents 100% Dimethicone, 100% PEG or 100% PPG or Alkyl. The properties of a product can be estimated depending upon its position within the selector triangle, relative to the corners.

Note: Test results. Actual results may vary.



24 **Silicone Specialties for Personal Care**

**Potential Applications**

Product Category and Product Name	INCI Name
<b>Silicone Structurants/Sensory Enhancers</b>	
<b>Velvessil* 034 organosilicone gel</b>	Caprylyl Methicone (and) C30-45 Alkyl Cetearyl Dimethicone Crosspolymer
<b>Velvessil FX gel powder</b>	Cyclopentasiloxane (and) Boron Nitride (and) Caprylyl Methicone (and) C30-45 Alkyl Cetearyl Dimethicone Crosspolymer
<b>Velvessil Plus gel</b>	Cyclopentasiloxane (and) C30-45 Alkyl Cetearyl Dimethicone Crosspolymer (and) PEG/PPG-20/23 Dimethicone
<b>Velvessil DM silicone</b>	Dimethicone (and) Cetearyl Dimethicone Crosspolymer
<b>Velvessil 125 crosspolymer network</b>	Cyclopentasiloxane (and) C30-45 Alkyl Cetearyl Dimethicone Crosspolymer
<b>Silsoft* Silicone gel</b>	Cyclopentasiloxane (and) Cetearyl Dimethicone/Vinyl Dimethicone Crosspolymer
<b>SFE839</b>	Cyclopentasiloxane (and) Dimethicone/Vinyl Dimethicone Crosspolymer
<b>Silicone Spheres</b>	
<b>Tospearl* AQ microspheres</b>	Polymethylsilsesquioxane (and) Polyquaternium-7 (and) PEG-7 Glyceryl Cocoate (and) Methylsilanol Tri-PEG-8 Glyceryl Cocoate
<b>Tospearl 150KA microspheres</b>	Polymethylsilsesquioxane
<b>Tospearl 1110A microspheres</b>	Polymethylsilsesquioxane
<b>Silsoft E-Pearl emulsion</b>	Polymethylsilsesquioxane (and) Dimethicone (and) Isohexadecane (and) PEG-40 Stearate (and) Cetearyl Methicone (and) Steareth-2 (and) Steareth-21
<b>Tospearl 120A microspheres</b>	Polymethylsilsesquioxane
<b>Tospearl 145A microspheres</b>	Polymethylsilsesquioxane
<b>Tospearl 2000B microspheres</b>	Polymethylsilsesquioxane
<b>Tospearl 3000A microspheres</b>	Polymethylsilsesquioxane
<b>Boron Nitride</b>	
<b>Momentive Softouch* CCS402 (BN) powder</b>	Boron Nitride
<b>Momentive Softouch CC6097 (BN) powder</b>	Boron Nitride
<b>Momentive Softouch CC6064 (BN) powder</b>	Boron Nitride (and) Dimethicone
<b>Momentive Softouch CCS102 (BN) powder</b>	Boron Nitride
<b>Momentive Softouch CC6004 (BN) powder</b>	Boron Nitride
<b>Momentive Softouch CC6058 (BN) powder</b>	Boron Nitride
<b>Momentive Softouch CC6059 (BN) powder</b>	Boron Nitride
<b>Momentive Softouch CC6069 (BN) powder</b>	Boron Nitride
<b>Silicone Resins</b>	
<b>SilForm* Flexible resin</b>	Polymethylsilsesquioxane
<b>SR1000</b>	Trimethylsiloxysilicate
<b>SS4230</b>	Cyclopentasiloxane (and) Trimethylsiloxysilicate
<b>SS4267</b>	Dimethicone (and) Trimethylsiloxysilicate
<b>Silsoft FR-5 fluid</b>	Trifluoropropyldimethylsiloxy/Trimethylsiloxy Silsesquioxane (and) Dimethicone
<b>SilForm FR-10 fluid</b>	Trifluoropropyldimethylsiloxy/Trimethylsiloxy Silsesquioxane (and) Dimethicone
<b>Silsoft Style silicone</b>	Silica Dimethicone Silylate (and) TEA Dodecylbenzenesulfonate (and) PEG/PPG-5/3 Trisiloxane
<b>Silicone Emulsifiers</b>	
<b>SF1528</b>	Cyclopentasiloxane (and) PEG/PPG-20/15 Dimethicone
<b>SF1540</b>	Cyclopentasiloxane (and) PEG/PPG-20/15 Dimethicone
<b>SilForm EOF emulsifier</b>	Polysilicone-25
<b>SilForm 60-A emulsifier</b>	PEG/PPG-20/15 Dimethicone (and) Diisopropyl Adipate
<b>Silicone Waxes</b>	
<b>SF1632</b>	Cetearyl Methicone
<b>SF1642</b>	C30-45 Alkyl Dimethicone

Note: A full line of basic silicones is available, including oils, volatiles, gums and various blends. Please contact Customer Service for additional information.

	Antiperspirant/Deodorant					Decorative & Color Cosmetics					Ethnic Hair Care				Hair Care						Hair Color Retention			Shaving		Shower & Bath			Skin & Sun Care			
	Creams	Gels	Roll-ons	Pump Sprays	Sticks/Solids	Eye Shadow	Mascara	Foundation	Lip Products	Powders	Shampoo	Conditioner	Styling Products	Relaxers	Shampoo	Conditioner	Curl Activators	Cuticle Coats	Waxes/Pomades	Mousse	Pump Spray	Shampoo	Conditioner	Developers	Pre/After-Shave Lotion	Shaving Foam	Liquid Soap	Shower Gel	Shower Conditioner	Body Care	Facial Care	Sunscreen
	X	X	X	X		X	X	X	X			X	X			X		X		X			X		X					X	X	X
	X	X	X		X	X	X	X	X	X			X					X	X						X				X	X	X	X
	X	X	X		X	X	X	X	X	X			X					X	X						X				X	X	X	X
					X	X	X	X	X	X			X					X	X						X			X	X	X	X	X
	X	X	X		X	X	X	X	X	X			X					X	X						X				X	X	X	X
	X	X	X		X	X	X	X	X	X															X					X	X	X
	X	X	X		X	X	X	X	X	X															X					X	X	X
								X							X	X									X		X	X	X	X	X	X
						X	X	X	X	X																				X	X	X
								X																	X		X	X	X	X	X	X
	X		X		X	X	X	X	X	X																				X	X	X
	X		X		X	X	X	X	X	X																				X	X	X
	X					X	X	X	X	X															X	X				X	X	X
	X					X	X	X	X	X															X	X				X	X	X
	X					X	X	X	X	X															X	X				X	X	X
	X					X	X	X	X	X															X	X				X	X	X
	X					X	X	X	X	X															X	X				X	X	X
	X					X	X	X	X	X															X	X				X	X	X
	X					X	X	X	X	X															X	X				X	X	X
	X					X	X	X	X	X															X	X				X	X	X
	X					X	X	X	X	X															X	X				X	X	X
	X					X	X	X	X	X															X	X				X	X	X
	X					X	X	X	X	X															X	X				X	X	X
	X					X	X	X	X	X															X	X				X	X	X
	X					X	X	X	X	X															X	X				X	X	X
	X					X	X	X	X	X															X	X				X	X	X
	X					X	X	X	X	X															X	X				X	X	X
	X					X	X	X	X	X															X	X				X	X	X
	X					X	X	X	X	X															X	X				X	X	X
	X					X	X	X	X	X															X	X				X	X	X
	X					X	X	X	X	X															X	X				X	X	X
	X					X	X	X	X	X															X	X				X	X	X
	X					X	X	X	X	X															X	X				X	X	X
	X					X	X	X	X	X															X	X				X	X	X
	X					X	X	X	X	X															X	X				X	X	X
	X					X	X	X	X	X															X	X				X	X	X
	X					X	X	X	X	X															X	X				X	X	X
	X					X	X	X	X	X															X	X				X	X	X
	X					X	X	X	X	X															X	X				X	X	X
	X					X	X	X	X	X															X	X				X	X	X
	X					X	X	X	X	X															X	X				X	X	X
	X					X	X	X	X	X															X	X				X	X	X
	X					X	X	X	X	X															X	X				X	X	X
	X					X	X	X	X	X															X	X				X	X	X
	X					X	X	X	X	X															X	X				X	X	X
	X					X	X	X	X	X															X	X				X	X	X
	X					X	X	X	X	X															X	X				X	X	X
	X					X	X	X	X	X															X	X				X	X	X
	X					X	X	X	X	X															X	X				X	X	X
	X					X	X	X	X	X															X	X				X	X	X
	X					X	X	X	X	X															X	X				X	X	X
	X					X	X	X	X	X															X	X				X	X	X
	X					X	X	X	X	X															X	X				X	X	X
	X					X	X	X	X	X															X	X				X	X	X
	X					X	X	X	X	X															X	X				X	X	X
	X					X	X	X	X	X															X	X				X	X	X
	X					X	X	X	X	X															X	X				X	X	X
	X					X	X	X	X	X															X	X				X	X	X
	X					X	X	X	X	X															X	X				X	X	X
	X					X	X	X	X	X															X	X				X	X	X
	X					X	X	X	X	X															X	X				X	X	X
	X					X	X	X	X	X															X	X				X	X	X
	X					X	X	X	X	X															X	X				X	X	X
	X					X	X	X	X	X															X	X				X	X	X
	X					X	X	X	X	X															X	X				X	X	X
	X					X	X	X	X	X															X	X				X	X	X
	X					X	X	X	X	X															X	X				X	X	X
	X					X	X	X	X	X															X	X				X	X	X
	X					X	X	X	X	X															X	X				X	X	X
	X					X	X	X	X	X															X	X				X	X	X
	X					X	X	X	X	X															X	X				X	X	X
	X					X	X	X	X	X															X	X				X	X	X
	X					X	X	X	X	X															X	X				X	X	X
	X					X	X	X	X	X															X	X				X	X	X
	X					X	X	X	X	X															X	X				X	X	X
	X					X	X	X	X	X															X	X				X	X	X
	X					X	X	X	X	X															X	X				X	X	X
	X					X	X	X	X	X															X	X				X	X	X
	X					X	X	X	X	X															X	X				X	X	X
	X					X																										

26 **Silicone Specialties for Personal Care**

**Potential Applications**

Product Category and Product Name	INCI Name
<b>Alkyl Silicones</b>	
Silsoft* ETS trisiloxane	Ethyl Trisiloxane
Silsoft 034 organosilicone fluid	Caprylyl Methicone
<b>Silicone Polyacrylate Emulsion</b>	
Silsoft SurFace PF film former	Dimethicone PEG-8 Polyacrylate
<b>Silicone Quats</b>	
Silsoft Q PF cationic aminosilicone terpolymer	Water (and) Silicone Quaternium-18 (and) Trideceth-6 (and) Trideceth-12
Silsoft Care quat blend	Cyclopentasiloxane (and) Silicone Quaternium-18
<b>Phenyl Modified Fluids</b>	
SF1550	Phenyltrimethicone
SF1555	Bisphenylpropyl Dimethicone
SilShine* 151 gloss additive	Phenylpropyldimethylsiloxysilicate
<b>Aminofunctional Silicones/Amodimethicone</b>	
Silsoft A+ conditioning agent	PEG-40/PPG-8 Methylaminopropyl/Hydroxypropyl Dimethicone Copolymer
Silsoft AX conditioning agent	Bis-Cetearyl Amodimethicone
Silsoft AX-E conditioning agent	Bis-Cetearyl Amodimethicone (and) Ceteareth-7 (and) Ceteareth-25 <sup>(1)</sup>
SF1708	Amodimethicone
Silsoft A-843 copolymer	Bisamino PEG/PPG-41/3 Aminoethyl PG-Propyl Dimethicone
Silsoft Tone color retaining conditioning agent	Polysilicone-18 Cetyl Phosphate
<b>Aminofunctional Emulsions</b>	
Silsoft EMU 8110-N emulsion	Water (and) Dimethiconol (and) Amodimethicone (and) Bisamino PEG/PPG-41/3 Aminoethyl PG-Propyl Dimethicone (and) Laureth-4 (and) Laureth-5 (and) Laureth-23 (and) PEG-55 Stearate
SM2658	Amodimethicone (and) Trideceth-12 (and) Glycerin (and) Cetrimonium Chloride
SME253 PF	Amodimethicone (and) C11-15 Pareth-7 (and) Laureth-9 (and) Glycerin (and) Trideceth-12
<b>Polyether Siloxane Copolymers</b>	
SF1188A	PEG/PPG-20/15 Dimethicone
Silsoft 880 dimethicone copolyol	PEG-12 Dimethicone
Silsoft 860 dimethicone copolyol	PEG-10 Dimethicone
Silsoft 440 dimethicone copolyol	PEG-20/PPG-23 Dimethicone
SF1288	PEG-12 Dimethicone
Silsoft 895 dimethicone copolyol	PEG-17 Dimethicone
Silsoft 900 dimethicone copolyol	PPG-12 Dimethicone
Silsoft SEL fluid	Polysilicone-16 (and) Trideceth-5
Silsoft TT fluid	Polysilicone-17 (and) Trideceth-5 (and) Meroxapol 172
<b>Gum Fluid Blends</b>	
Silsoft 1215	Cyclopentasiloxane (and) Dimethiconol
SF1236	Dimethicone
CF1251	Dimethicone

Note: A full line of basic silicones is available, including oils, volatiles, gums and various blends. Please contact Customer Service for additional information.

(1) Proposed



	Antiperspirant/ Deodorant					Decorative & Color Cosmetics					Ethnic Hair Care				Hair Care						Hair Color Retention			Shaving		Shower & Bath			Skin & Sun Care				
	Creams	Gels	Roll-ons	Pump Sprays	Sticks/Solids	Eye Shadow	Mascara	Foundation	Lip Products	Powders	Shampoo	Conditioner	Styling Products	Relaxers	Shampoo	Conditioner	Curl Activators	Cuticle Coats	Waxes/Pomades	Mousse	Pump Spray	Shampoo	Conditioner	Developers	Pre/After-Shave Lotion	Shaving Foam	Liquid Soap	Shower Gel	Shower Conditioner	Body Care	Facial Care	Sunscreen	
	X	X	X	X	X	X	X	X	X	X									X			X			X	X				X	X	X	
								X	X				X						X		X				X		X	X	X	X	X	X	
							X	X					X							X	X												
											X	X			X	X				X	X	X	X	X				X	X	X			
												X	X			X	X	X	X				X					X	X	X			
	X	X	X	X	X			X	X	X								X	X		X				X						X	X	X
	X	X	X	X	X			X	X	X								X	X		X				X					X	X	X	
	X	X	X	X	X	X		X	X	X		X	X			X		X	X		X				X					X	X	X	
											X	X	X		X	X				X	X	X	X	X									
											X	X	X		X	X		X	X		X	X	X	X									
											X	X			X	X				X		X	X				X	X	X				
											X	X			X	X						X						X	X	X			
															X	X																	
											X	X	X	X		X			X				X					X	X				
	X	X	X	X	X	X		X	X		X	X	X	X	X	X	X		X	X	X	X	X		X	X	X	X	X	X	X	X	X
	X	X	X	X	X	X		X	X		X	X	X	X	X	X	X		X	X	X	X	X		X	X	X	X	X	X	X	X	X
						X		X	X	X		X	X			X	X	X	X						X						X	X	X
								X								X	X	X	X											X	X	X	
											X					X	X	X	X											X	X	X	
											X					X	X	X	X											X	X	X	
											X					X	X	X	X											X	X	X	
											X					X	X	X	X											X	X	X	
											X					X	X	X	X											X	X	X	
											X					X	X	X	X											X	X	X	
											X					X	X	X	X											X	X	X	
											X					X	X	X	X											X	X	X	
											X					X	X	X	X											X	X	X	
											X					X	X	X	X											X	X	X	
											X					X	X	X	X											X	X	X	
											X					X	X	X	X											X	X	X	
											X					X	X	X	X											X	X	X	
											X					X	X	X	X											X	X	X	
											X					X	X	X	X											X	X	X	
											X					X	X	X	X											X	X	X	
											X					X	X	X	X											X	X	X	
											X					X	X	X	X											X	X	X	
											X					X	X	X	X											X	X	X	
											X					X	X	X	X											X	X	X	
											X					X	X	X	X											X	X	X	
											X					X	X	X	X											X	X	X	
											X					X	X	X	X											X	X	X	
											X					X	X	X	X											X	X	X	
											X					X	X	X	X											X	X	X	
											X					X	X	X	X											X	X	X	
											X					X	X	X	X											X	X	X	
											X					X	X	X	X											X	X	X	
											X					X	X	X	X											X	X	X	
											X					X	X	X	X											X	X	X	
											X					X	X	X	X											X	X	X	
											X					X	X	X	X											X	X	X	
											X					X	X	X	X											X	X	X	
											X					X	X	X	X											X	X	X	
											X					X	X	X	X											X	X	X	
											X					X	X	X	X											X	X	X	
											X					X	X	X	X											X	X	X	
											X					X	X	X	X											X	X	X	
											X					X	X	X	X											X	X	X	
											X					X	X	X	X											X	X	X	
											X					X	X	X	X											X	X	X	
											X					X	X	X	X											X	X	X	
											X					X	X	X	X											X	X	X	
											X					X	X	X	X											X	X	X	
											X					X	X	X	X											X	X	X	
											X					X	X	X	X											X	X	X	
											X					X	X	X	X											X	X	X	
											X					X	X	X	X											X	X	X	
											X					X	X	X	X											X	X	X	
											X					X	X	X	X											X	X	X	
											X					X	X	X	X											X	X	X	
											X					X	X	X	X											X	X	X	
											X					X	X	X	X											X	X	X	
											X					X	X	X	X											X	X	X	
											X					X	X	X	X											X	X	X	
											X					X	X	X	X											X	X	X	
											X					X	X	X	X											X	X	X	
											X					X	X	X	X											X	X	X	
											X					X	X	X	X											X	X	X	
											X					X	X	X	X											X	X	X	
											X					X	X	X	X											X	X	X	
											X					X	X	X	X											X	X	X	
											X					X	X	X	X											X	X	X	
											X					X	X	X	X											X	X	X	
											X					X																	

## 28 Silicone Specialties for Personal Care

### Typical Physical Properties<sup>(1)</sup>

Product Category and Product Name	INCI Name
<b>Silicone Structurants/Sensory Enhancers</b>	
<b>Velvesil* 034 organosilicone gel</b>	Caprylyl Methicone (and) C30-45 Alkyl Cetearyl Dimethicone Crosspolymer
<b>Velvesil FX gel powder</b>	Cyclopentasiloxane (and) Boron Nitride (and) Caprylyl Methicone (and) C30-45 Alkyl Cetearyl Dimethicone Crosspolymer
<b>Velvesil Plus gel</b>	Cyclopentasiloxane (and) C30-45 Alkyl Cetearyl Dimethicone Crosspolymer (and) PEG/PPG-20/23 Dimethicone
<b>Velvesil DM silicone</b>	Dimethicone (and) Cetearyl Dimethicone Crosspolymer
<b>Velvesil 125 crosspolymer network</b>	Cyclopentasiloxane (and) C30-45 Alkyl Cetearyl Dimethicone Crosspolymer
<b>Silsoft* silicone gel</b>	Cyclopentasiloxane (and) Cetearyl Dimethicone/Vinyl Dimethicone Crosspolymer
<b>SFE839</b>	Cyclopentasiloxane (and) Dimethicone/Vinyl Dimethicone Crosspolymer
<b>Silicone Spheres</b>	
<b>Tospearl* AQ microspheres</b>	Polymethylsilsesquioxane (and) Polyquaternium-7 (and) PEG-7 Glyceryl Cocoate (and) Methylsilanol Tri-PEG-8 Glyceryl Cocoate
<b>Tospearl 150KA microspheres</b>	Polymethylsilsesquioxane
<b>Tospearl 1110A microspheres</b>	Polymethylsilsesquioxane
<b>Silsoft E-Pearl emulsion</b>	Polymethylsilsesquioxane (and) Dimethicone (and) Isohexadecane (and) PEG-40 Stearate (and) Cetearyl Methicone (and) Steareth-2 (and) Steareth-21
<b>Tospearl 120A microspheres</b>	Polymethylsilsesquioxane
<b>Tospearl 145A microspheres</b>	Polymethylsilsesquioxane
<b>Tospearl 2000B microspheres</b>	Polymethylsilsesquioxane
<b>Tospearl 3000A microspheres</b>	Polymethylsilsesquioxane
<b>Boron Nitride</b>	
<b>Momentive Softouch* CCS402 (BN) powder</b>	Boron Nitride
<b>Momentive Softouch CC6097 (BN) powder</b>	Boron Nitride
<b>Momentive Softouch CC6064 (BN) powder</b>	Boron Nitride (and) Dimethicone
<b>Momentive Softouch CCS102 (BN) powder</b>	Boron Nitride
<b>Momentive Softouch CC6004 (BN) powder</b>	Boron Nitride
<b>Momentive Softouch CC6058 (BN) powder</b>	Boron Nitride
<b>Momentive Softouch CC6059 (BN) powder</b>	Boron Nitride
<b>Momentive Softouch CC6069 (BN) powder</b>	Boron Nitride
<b>Silicone Resins</b>	
<b>SilForm* Flexible resin</b>	Polymethylsilsesquioxane
<b>SR1000</b>	Trimethylsiloxysilicate
<b>SS4230</b>	Cyclopentasiloxane (and) Trimethylsiloxysilicate
<b>SS4267</b>	Dimethicone (and) Trimethylsiloxysilicate
<b>Silsoft FR-5 fluid</b>	Trifluoropropyldimethylsiloxy/Trimethylsiloxy Silsesquioxane (and) Dimethicone
<b>SilForm FR-10 fluid</b>	Trifluoropropyldimethylsiloxy/Trimethylsiloxy Silsesquioxane (and) Dimethicone
<b>Silsoft Style silicone</b>	Silica Dimethicone Silylate (and) TEA Dodecylbenzenesulfonate (and) PEG/PPG-5/3 Trisiloxane
<b>Silicone Emulsifiers</b>	
<b>SF1528</b>	Cyclopentasiloxane (and) PEG/PPG-20/15 Dimethicone
<b>SF1540</b>	Cyclopentasiloxane (and) PEG/PPG-20/15 Dimethicone
<b>SilForm EOF emulsifier</b>	Polysilicone-25
<b>SilForm 60-A emulsifier</b>	PEG/PPG-20/15 Dimethicone (and) Diisopropyl Adipate
<b>Silicone Waxes</b>	
<b>SF1632</b>	Cetearyl Methicone
<b>SF1642</b>	C30-45 Alkyl Dimethicone

Note: A full line of basic silicones is available, including oils, volatiles, gums and various blends. Please contact Customer Service for additional information.

(1) Typical data are average data. The actual values may vary. Product specifications for specific applications need to be agreed upon individually.

(2) Worked viscosity

	% Silicone	Viscosity @ 25°C	Specific Gravity @ 25°C	Flash Point °C (Closed Cup)	Refractive Index @ 25°C	Appearance
	100	>100,000 cP	0.85	110	1.413	Clear to translucent gel
	70–90		0.959	77		White gel powder
	100	>150,000 cP	0.95	77		Translucent gel
	100	>65,000 cSt	0.96	135	1.399	Clear to translucent gel
	100	>130,000 cP	0.95	77	1.399	Translucent gel
	100	10,000–25,000 cP(2)	0.87	77		Clear, colorless gel
	100	10,000–30,000 cP(2)	0.95	82	1.396	Clear, colorless gel
	>97		1.36			White powder
	100		1.32			White, spiky powder
	100		1.32			White, spherical powder
	60	7,000 cP	1.02			White liquid
	100		1.32			White, spherical powder
	100		1.32			White, spherical powder
	100		1.32			White, spherical powder
	100		1.32			White, spherical powder
			2.28			White crystal
			2.28			White crystal
	3		2.19			White crystal
			2.24		1.65 (in-plane)	White crystal
			2.24		1.65 (in-plane)	White crystal
			2.24		1.65 (in-plane)	White crystal
			2.24		1.65 (in-plane)	White crystal
			2.24		1.65 (in-plane)	White crystal
	100		1.24		238	White powder
	100					White powder
	100	70–200 cSt	1.05	>65.5	1.406	Clear, colorless liquid
	100	300–700 cSt	1.025	201	1.409	Clear, colorless liquid
	100	0.5 Pas max	1.045	190	1.406	Clear liquid
	100	0.4 Pas	1.06	190	1.406	Clear liquid
	20	10	1			White liquid
	100	250 cSt max.	0.959	77		Colorless liquid
	100	10,000–50,000 cP	1.00	63	1.407	Cream to white liquid
	95	2,000–10,000 cSt		102		Straw-colored liquid
	60	8,500 cP	0.96	104	1.4241	Transparent, straw-colored liquid
	100		0.81	>100	1.459	White wax
	100			>100		Tan-colored wax pastilles



## 30 Silicone Specialties for Personal Care

### Typical Physical Properties<sup>(1)</sup>

Product Category and Product Name	INCI Name
<b>Alkyl Silicones</b>	
Silsoft* ETS trisiloxane	Ethyl Trisiloxane
Silsoft 034 organosilicone fluid	Caprylyl Methicone
<b>Silicone Polyacrylate Emulsion</b>	
Silsoft SurFace PF film former	Dimethicone PEG-8 Polyacrylate
<b>Silicone Quats</b>	
Silsoft Q PF cationic aminosilicone terpolymer	Water (and) Silicone Quaternium-18 (and) Trideceth-6 (and) Trideceth-12
Silsoft Care quat blend	Cyclopentasiloxane (and) Silicone Quaternium-18
<b>Phenyl Modified Fluids</b>	
SF1550	Phenyltrimethicone
SF1555	Bisphenylpropyl Dimethicone
SilShine* 151 gloss additive	Phenylpropyldimethylsiloxyisilicate
<b>Aminofunctional Silicones/Amodimethicone</b>	
Silsoft A+ conditioning agent	PEG-40/PPG-8 Methylaminopropyl/Hydroxypropyl/Dimethicone Copolymer
Silsoft AX conditioning agent	Bis-Cetearyl Amodimethicone
Silsoft AX-E conditioning agent	Bis-Cetearyl Amodimethicone (and) Ceteareth-7 (and) Ceteareth-25 <sup>(2)</sup>
SF1708	Amodimethicone
Silsoft A-843 copolymer	Bisamino PEG/PPG-41/3 Aminoethyl PG-Propyl Dimethicone
Silsoft Tone color retaining conditioning agent	Polysilicone-18 Cetyl Phosphate
<b>Aminofunctional Emulsions</b>	
Silsoft EMU 8110-N emulsion	Water (and) Dimethiconol (and) Amodimethicone (and) Bisamino PEG/PPG-41/3 Aminoethyl PG-Propyl Dimethicone (and) Laureth-4 (and) Laureth-5 (and) Laureth-23 (and) PEG-55 Stearate
SM2658	Amodimethicone (and) Trideceth-12 (and) Glycerin (and) Cetrimonium Chloride
SME253 PF	Amodimethicone (and) C11-15 Pareth-7 (and) Laureth-9 (and) Glycerin (and) Trideceth-12
<b>Polyether Siloxane Copolymers</b>	
SF1188A	PEG/PPG-20/15 Dimethicone
Silsoft 880 dimethicone copolyol	PEG-12 Dimethicone
Silsoft 860 dimethicone copolyol	PEG-10/PEG-10 Dimethicone
Silsoft 440 dimethicone copolyol	PEG-20/PPG-23 Dimethicone
SF1288	PEG-12 Dimethicone
Silsoft 895 dimethicone copolyol	PEG-17 Dimethicone
Silsoft 900 dimethicone copolyol	PPG-12 Dimethicone
Silsoft SEL fluid	Polysilicone-16 (and) Trideceth-5
Silsoft TT fluid	Polysilicone-17 (and) Trideceth-5 (and) Meroxapol 172
<b>Gum Fluids Blends</b>	
Silsoft 1215	Cyclopentasiloxane (and) Dimethiconol
SF1236	Dimethicone
CF1251	Dimethicone

Note: A full line of basic silicones is available, including oils, volatiles, gums and various blends. Please contact Customer Service for additional information.

(1) Typical data are average data. The actual values may vary.  
Product specifications for specific applications need to be agreed upon individually.

(2) Proposed

	% Silicone	Viscosity @ 25°C	Specific Gravity @ 25°C	Flash Point °C (Closed Cup)	Refractive Index @ 25°C	Appearance
	>98	1.1 mPas 20°C	0.83	45		Clear, colorless liquid
	100	3.3 cSt max.	0.83	110	1.413	Clear, colorless liquid
	25	100–1,000 cP	1.02			Milky white to beige liquid
	20	~100 mPas	0.99			Clear to slightly hazy liquid
	100	4,000 cSt	0.95		1.369	Colorless to yellowish liquid
	100	15–30 cSt	0.98	138 by DIN 51758	1.46	Clear, colorless liquid
	100	5–25 cSt	0.968	>204	1.47	Clear, colorless liquid
	100	280–1,000 cSt	1.07	238 by DIN 51757	1.51	Clear, slightly yellow liquid
	30	10,000 cSt				Transparent to hazy liquid
	100	5,000–20,000 cSt				Clear, colorless
	40	40–200 cP	1			Milky white liquid
	100	1,250–2,500 cSt	1.01	100		Clear to straw-colored liquid
	30	5,000 cSt	1.01	67		Translucent, yellow liquid
	95	80,000–120,000 cSt	0.99	>110		Pale yellow, hazy liquid
	50	10,000 cP	1.00			Milky white fluid
	35		0.99	>100		Light yellow liquid
	17–20	2,000 cP max.	1.00			White liquid
	100	800–1,400 cSt	1.04	>100	1.448	Clear, straw-colored liquid
	100	350–950 cSt	1.09	129	1.457	Pale yellow liquid
	100	174 cSt	1.002	132	1.442	Clear, straw-colored liquid
	100	1,700 cSt	1.023	97	1.447	Clear, pale yellow liquid
	100	250–600 cSt	1.07	>150	1.45	Clear, colorless liquid
	100		1.078	140	1.453	Colorless wax
	100	250 cSt	0.989	112	1.435	Clear, straw-colored liquid
	10	40–120 cP	1	116	1.4538	Clear, straw-colored liquid
	25	35–70 cP	0.989	160	1.4549	Clear, straw-colored liquid
	100	4,500–8,000 mPas	0.95	77	1.40	Clear, colorless liquid
	100	3,000–5,000 cP	0.92	>135	1.40	Clear, colorless liquid
	100	350,000–850,000 cP	0.97	148	1.40	Clear, colorless liquid

## Customer Service Centers

### Email

4information@momentive.com

### Telephone

#### Americas

+1 888 443 9466  
+1 614 986 2497

#### Europe, Middle East, Africa and India

+00 800 836 43581  
+40 212 534754

#### Asia Pacific

China  
+800 820 0202

#### Japan

+81 276 20 6182

#### All Other Countries

+60 3 9206 1543

To find a specific language, visit the Contact Us page at Momentive.com. You may select a country to view additional languages and the corresponding telephone numbers.

For email inquiries, we will make every attempt to respond in the incoming written language. If that is not possible, we will respond in English.

### Patent Status

Nothing contained herein shall be construed to imply the nonexistence of any relevant patents or to constitute the permission, inducement or recommendation to practice any invention covered by any patent, without authority from the owner of the patent.

### Product Safety, Handling and Storage

Customers should review the latest Material Safety Data Sheet (MSDS) and label for product safety information, safe handling instructions, personal protective equipment if necessary, emergency service contact information, and any special storage conditions required for safety. Momentive Performance Materials (MPM) maintains an around-the-clock emergency service for its products. MSDS are available at [www.momentive.com](http://www.momentive.com) or, upon request, from any MPM representative. For product storage and handling procedures to maintain the product quality within our stated specifications, please review Certificates of Analysis, which are available in the Order Center. Use of other materials in conjunction with MPM products (for example, primers) may require additional precautions. Please review and follow the safety information provided by the manufacturer of such other materials.

### Limitations

Customers must evaluate Momentive Performance Materials products and make their own determination as to fitness of use in their particular applications.

### DISCLAIMER:

**THE MATERIALS, PRODUCTS AND SERVICES OF MOMENTIVE PERFORMANCE MATERIALS INC. AND ITS SUBSIDIARIES AND AFFILIATES (COLLECTIVELY "SUPPLIER"), ARE SOLD SUBJECT TO SUPPLIER'S STANDARD CONDITIONS OF SALE, WHICH ARE INCLUDED IN THE APPLICABLE DISTRIBUTOR OR OTHER SALES AGREEMENT, PRINTED ON THE BACK OF ORDER ACKNOWLEDGMENTS AND INVOICES, AND AVAILABLE UPON REQUEST. ALTHOUGH ANY INFORMATION, RECOMMENDATIONS, OR ADVICE CONTAINED HEREIN IS GIVEN IN GOOD FAITH, SUPPLIER MAKES NO WARRANTY OR GUARANTEE, EXPRESS OR IMPLIED, (i) THAT THE RESULTS DESCRIBED HEREIN WILL BE OBTAINED UNDER END-USE CONDITIONS, OR (ii) AS TO THE EFFECTIVENESS OR SAFETY OF ANY DESIGN INCORPORATING ITS PRODUCTS, MATERIALS, SERVICES, RECOMMENDATIONS OR ADVICE. EXCEPT AS PROVIDED IN SUPPLIER'S STANDARD CONDITIONS OF SALE, SUPPLIER AND ITS REPRESENTATIVES SHALL IN NO EVENT BE RESPONSIBLE FOR ANY LOSS RESULTING FROM ANY USE OF ITS MATERIALS, PRODUCTS OR SERVICES DESCRIBED HEREIN.** Each user bears full responsibility for making its own determination as to the suitability of Supplier's materials, services, recommendations, or advice for its own particular use. Each user must identify and perform all tests and analyses necessary to assure that its finished parts incorporating Supplier's products, materials, or services will be safe and suitable for use under end-use conditions. Nothing in this or any other document, nor any oral recommendation or advice, shall be deemed to alter, vary, supersede, or waive any provision of Supplier's standard Conditions of Sale or this Disclaimer, unless any such modification is specifically agreed to in a writing signed by Supplier. No statement contained herein concerning a possible or suggested use of any material, product, service or design is intended, or should be construed, to grant any license under any patent or other intellectual property right of Supplier covering such use or design, or as a recommendation for the use of such material, product, service or design in the infringement of any patent or other intellectual property right.

\*SilForm, SilShine, Silsoft, Momentive Softtouch, Tospearl and Velsil are trademarks of Momentive Performance Materials Inc.

Momentive and the Momentive logo are trademarks of Momentive Performance Materials Inc.



260 Hudson River Road  
Waterford, NY 12188 USA  
[momentive.com](http://momentive.com)